



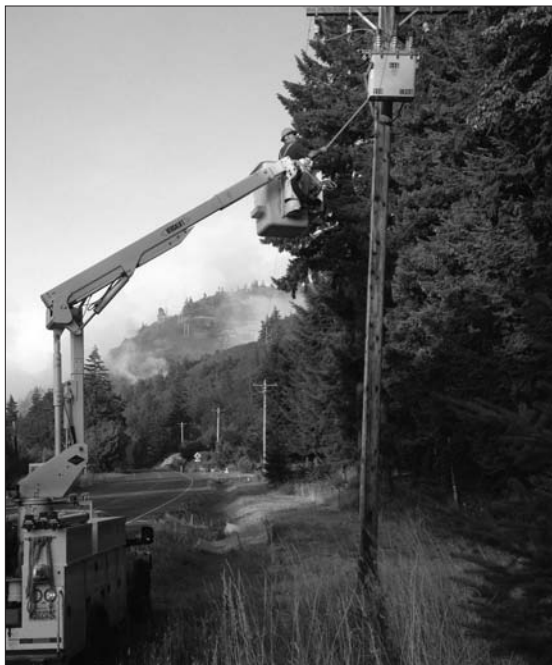
Recent Fire Affects PUD Territory

Residents evacuated as more than 1,600 acres burned

At about 1:30 p.m. on September 5, a fire started along the east side of Highway 141, two miles north of White Salmon. As the fire grew in the next few days and the following week, structures were threatened and many people were evacuated from their homes. Ultimately, nearly 1,644 acres burned.

Although the fire was devastating to many residents in the area, the infrastructure to carry power to that area remained relatively unharmed. One pole, part of a 69 kilovolt transmission structure between BPA's Bald Mountain Substation and KPUD's Husum Substation, and some damaged conductor causing a short outage to the Northwestern Lake area, were the only casualties.

The safety of the employees and keeping the power on for customers, are both consistently the priority for Klickitat PUD. Reliability of power to customers in fire situations is essential. Most consumers do not own generators to operate the water pumps in their wells, and available water is priceless in these situations. ■



Above, Justen Greenwood establishes a visible open point for work on the Northwestern Lake feeder for damage sustained from the fire. Top, smoke fills the air as fire spreads in KPUD's service territory.

Top photo by Dewayne Woody



Left, damage to the 69kV transmission structure that brings power from BPA's Bald Mountain Substation to the KPUD Husum Substation. Although the pole was burned in two by the fire, no power outage resulted from the damage.

Below, the crews replaced the pole "hot," leaving all customers with power while completing their work.

Photos by Bernie Predeek



The night glows eerily as fires continue for more than a week. More than 1,600 acres burned.

Photo by Dewayne Woody